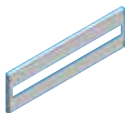




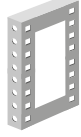


Accessori Serie AM *AM Series of accessories*

Dimensioni di riferimento HxPxL (mm) <i>Reference dimensions WxDxL (mm)</i>	Codice armadio <i>Cabinet code</i>	Pannelli modulari * <i>Modular panels *</i>			Colonna risalita cavi ad accesso frontale o laterale <i>Cable lift column at front or side</i>		Tetto parapioggia <i>Rain cover</i>	Pannello divisorio verticale <i>Vertical partition panel</i>	Telaio per pannelli modulari <i>Frame for modular panels</i>
		AMMD	AMMD	AMMD	AMCF	AMCL	AMTP	AMDV	AMTM
									
			H 200	H 400	H 600	colonna frontale <i>front column</i>	colonna laterale <i>side column</i>		
H 1800									
1800x600x500	AM 180 60 50	AMMD 20 60	AMMD 40 60	AMMD 60 60	AMCF 180 50	AMCL 180 50	AMTP 60 50	AMDV 180 50	AMTM 180
1800x600x600	AM 180 60 60	AMMD 20 60	AMMD 40 60	AMMD 60 60	AMCF 180 60	AMCL 180 60	AMTP 60 50	AMDV 180 60	AMTM 180
1800x800x500	AM 180 80 50	AMMD 20 80	AMMD 40 80	AMMD 60 80	AMCF 180 50	AMCL 180 50	AMTP 80 50	AMDV 180 50	AMTM 180
1800x800x600	AM 180 80 60	AMMD 20 80	AMMD 40 80	AMMD 60 80	AMCF 180 60	AMCL 180 60	AMTP 80 50	AMDV 180 60	AMTM 180
1800x1000x500	AM 180 100 50	AMMD 20 100	AMMD 40 100	AMMD 60 100	AMCF 180 50	AMCL 180 50	AMTP 100 50	AMDV 180 50	AMTM 180
1800x1000x600	AM 180 100 060	AMMD 20 100	AMMD 40 100	AMMD 60 100	AMCF 180 60	AMCL 180 60	AMTP 100 50	AMDV 180 60	AMTM 180
H 2000									
2000x600x500	AM 200 60 50	AMMD 20 60	AMMD 40 60	AMMD 60 60	AMCF 180 50	AMCL 180 50	AMTP 60 50	AMDV 200 50	AMTM 200
2000x600x600	AM 200 60 60	AMMD 20 60	AMMD 40 60	AMMD 60 60	AMCF 180 60	AMCL 180 60	AMTP 60 50	AMDV 200 60	AMTM 200
2000x800x500	AM 200 80 50	AMMD 20 80	AMMD 40 80	AMMD 60 80	AMCF 180 50	AMCL 180 50	AMTP 80 50	AMDV 200 50	AMTM 200
2000x800x600	AM 200 80 60	AMMD 20 80	AMMD 40 80	AMMD 60 80	AMCF 180 60	AMCL 180 60	AMTP 80 50	AMDV 200 60	AMTM 200
2000x1000x500	AM 200 100 50	AMMD 20 100	AMMD 40 100	AMMD 60 100	AMCF 180 50	AMCL 180 50	AMTP 100 50	AMDV 200 50	AMTM 200
2000x1000x600	AM 200 100 60	AMMD 20 100	AMMD 40 100	AMMD 60 100	AMCF 180 60	AMCL 180 60	AMTP 100 50	AMDV 200 60	AMTM 200

* Per il codice dei pannelli modulari ciechi aggiungere la lettera "C" al codice attuale es. AMMDC 20 60

Per il codice dei pannelli modulari forati aggiungere la lettera "F" al codice attuale es. AMMDF 20 60

* The code for a solid modular panel is the current one plus the letter "C".
e.g. AMMDC 20 60.

The code for a drilled modular panel is the current one plus the letter "F".
e.g. AMMDF 20 60

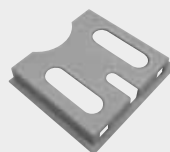
Cod. / Code **AMKU**



Kit unione quadro / Board connection kit

- > Kit composto da viteria e guarnizione necessaria per l'assemblaggio di armadi modulari in batteria.
- > Kit comprising nuts, screws and seals for the assembly of modular cabinets in sets.

Cod. / Code **TP**



Tasca portaschemi / Diagram pouch

- > Tasca disponibile in materiale plastico e in acciaio inox.
- > Pouch available in plastic and stainless steel.

Cod. / Code **AMPR**



Piedini regolabili / Adjustable feet

- > n° 4 piedini M8 in poliammide nero necessari per adattare il quadro a pavimentazioni sconnesse.
- > 4 x M8 black polyamide feet for adapting the board to uneven flooring.

Cod. / Code **FP**



Finestre protezione strumenti / Protective panels for instruments

- > Finestra in lexan incernierata per la protezione degli strumenti.
- > Hinged lexan panel for protection of instruments.